

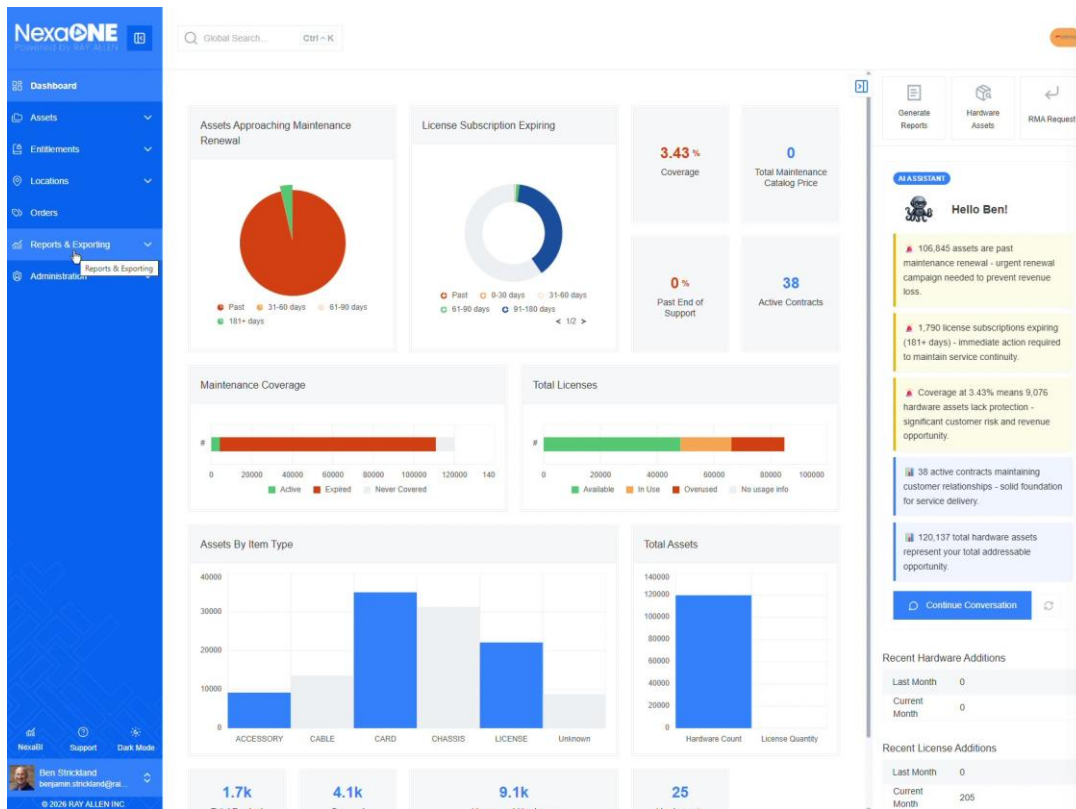
Reports: Cisco EA License Report

This guide explains how to access the Cisco EA License Report from Reports and Exporting section.

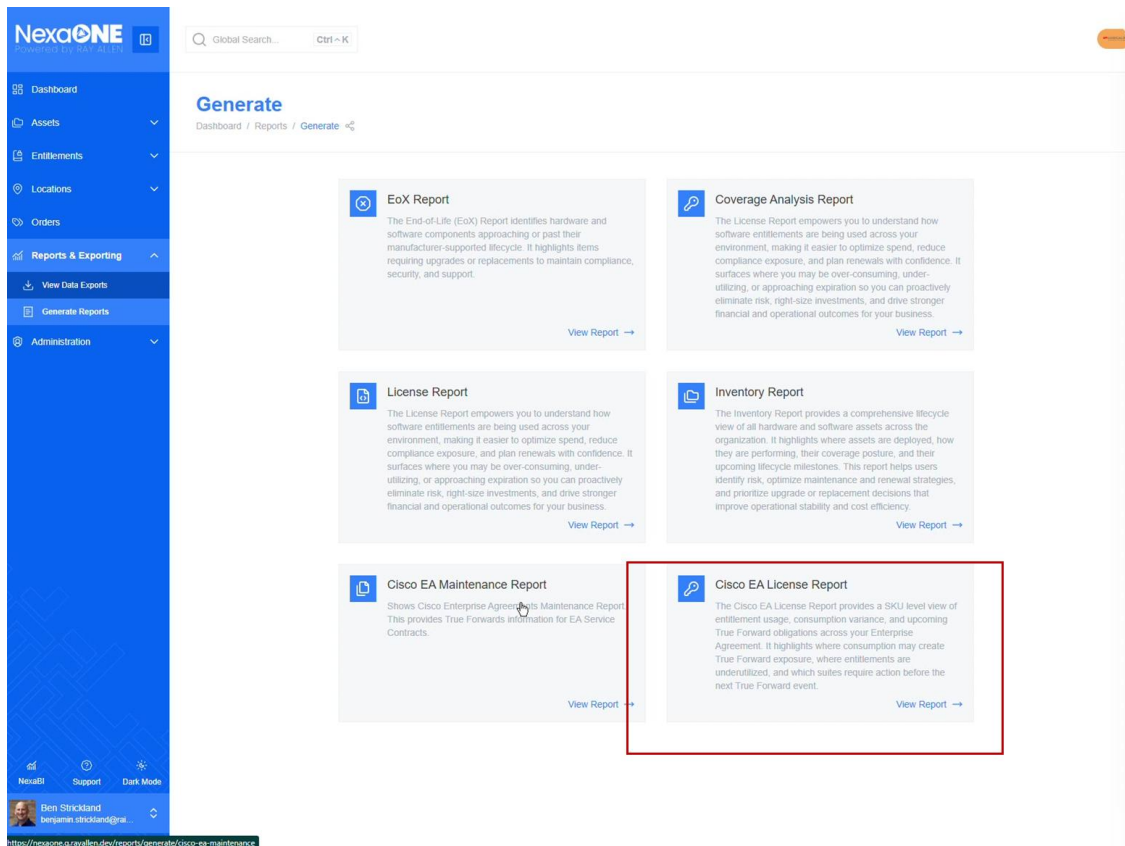
Access Cisco EA License Report

Go to **Reports and Exporting** and then click **Generate reports**.

Two new reports are available there: **Cisco EA Maintenance Report** and **Cisco EA License Report**. To open a report, pick the appropriate report, Cisco EA License Report.



Cisco EA License Report



Selecting Cisco EA License Report

The **EA License Report** focuses on licenses rather than maintenance agreements and helps explain the current true forward position of active license EAs.

It provides information to help user understand the overall true forward stance of current license EAs.

The report breaks information out into individual suites and lets user see:

1. Overall consumption
2. What has been used
3. The balance

Cisco EA License Report

The Cisco EA License Report provides a SKU level view of entitlement usage, consumption variance, and upcoming True Forward obligations across your Enterprise Agreement. It highlights where consumption may create True Forward exposure, where entitlements are underutilized, and which suites require action before the next True Forward event.

Yes True Forward Due	14.4k True Forward Due	April 2, 2026 Next True Forward Date	Yes Exceptional Growth Limit Exceeded
70.73 Percent Consumed	616.2k Saved with Value Shift	246.7k True Forward without Value Shift	

Client Name	Suite Name	Subscription ID	Total Entitlements	Total Consumption	PreEA Consumption	Balance
Virtucon	Secure Workload	SR104657	115	0	0	115
Virtucon	Cisco Spaces	SR104657	50	50	0	0
Virtucon	Security Add Ons	SR104657	8,000	0	0	8000
Virtucon	Cisco DNA Wireless	SR104657	270	294	0	-24
Virtucon	SAN Switching	SR104657	8	8	0	0
Virtucon	Nexus Switching	SR104657	160	146	0	14
Virtucon	ThousandEyes	SR104657	45,112	45,112	0	0
Virtucon	Secure Network and Cloud An...	SR104657	11,500	0	0	11500
Virtucon	Cisco DNA SD-WAN & Routing	SR104657	124	27	0	97
Virtucon	Cisco DNA Switching	SR104657	173	142	0	31

Cisco EA License Report overview

True Forward and Value Shift Details

The report can help calculate items such as:

4. Whether a true forward is going to be necessary
5. What value shift looks like
6. How much money has been reclaimed as part of the value shift in the agreement
7. What the true forward would have looked like if value shift did not exist

Cisco EA License Report

The Cisco EA License Report provides a SKU level view of entitlement usage, consumption variance, and upcoming True Forward obligations across your Enterprise Agreement. It highlights where consumption may create True Forward exposure, where entitlements are underutilized, and which suites require action before the next True Forward event.

- True Forward Due: **Yes**
- True Forward Due: **14.4k**
- Next True Forward Date: **April 2, 2026**
- Exceptional Growth Limit Exceeded: **Yes**
- Percent Consumed: **70.73**
- Saved with Value Shift: **616.2k**
- True Forward Without Value Shift: **246.7k**

Total Entitlements	Total Consumption	PreEA Consumption	Balance	Suite Balance	Next True Forward Date	Deployment Type
115	0	0	115	Underconsumed	April 2, 2026	On-Prem
50	50	0		Fully Consumed	April 2, 2026	On-Prem
8,000	0	0	8000	Underconsumed	April 2, 2026	On-Prem
270	294	0	-24	Overconsumed	April 2, 2026	On-Prem
8	8	0		Fully Consumed	April 2, 2026	On-Prem
160	146	0	14	Overconsumed	April 2, 2026	On-Prem
45,112	45,112	0		Fully Consumed	April 2, 2026	CLOUD
11,500	0	0	11500	Underconsumed	April 2, 2026	On-Prem
124	27	0	97	Overconsumed	April 2, 2026	On-Prem
173	142	0	31	Overconsumed	April 2, 2026	On-Prem

Displaying 1 - 10 of 14 records.

Compare with Enterprise Agreements Module

For more detail on the individual items in these EA subscription reports, compare the information against the **Enterprise Agreements** module under **Entitlements**.

This can be used to see suite-level information and individual license-level information at the same time.

Cisco EA License Report

Dashboard / Reports / Generate / Cisco EA License Report

Cisco EA License Report

The Cisco EA License Report provides a SKU level view of entitlement usage, consumption variance, and upcoming True Forward obligations across your Enterprise Agreement. It highlights where consumption may create True Forward exposure, where entitlements are underutilized, and which suites require action before the next True Forward event.

- Yes** True Forward Due
- 14.4k** True Forward Due
- April 2, 2026** Next True Forward Date
- Yes** Exceptional Growth Limit Exceeded
- 70.73** Percent Consumed
- 616.2k** Saved with Value Shift
- 246.7k** True Forward without Value Shift

Client Name	Suite Name	Subscription ID	Total Entitlements	Total Consumption	PreEA Consumption	Balance
Virtucon	Secure Workload	SR104657	115	0	0	115
Virtucon	Cisco Spaces	SR104657	50	50	0	
Virtucon	Security Add Ons	SR104657	8,000	0	0	8,000
Virtucon	Cisco DNA Wireless	SR104657	270	294	0	-24
Virtucon	SAN Switching	SR104657	8	8	0	
Virtucon	Nexus Switching	SR104657	180	146	0	14
Virtucon	ThousandEyes	SR104657	45,112	45,112	0	
Virtucon	Secure Network and Cloud An...	SR104657	11,500	0	0	11,500
Virtucon	Cisco DNA SD-WAN & Routing	SR104657	124	27	0	97
Virtucon	Cisco DNA Switching	SR104657	173	142	0	31

Displaying 1 - 10 of 14 records.